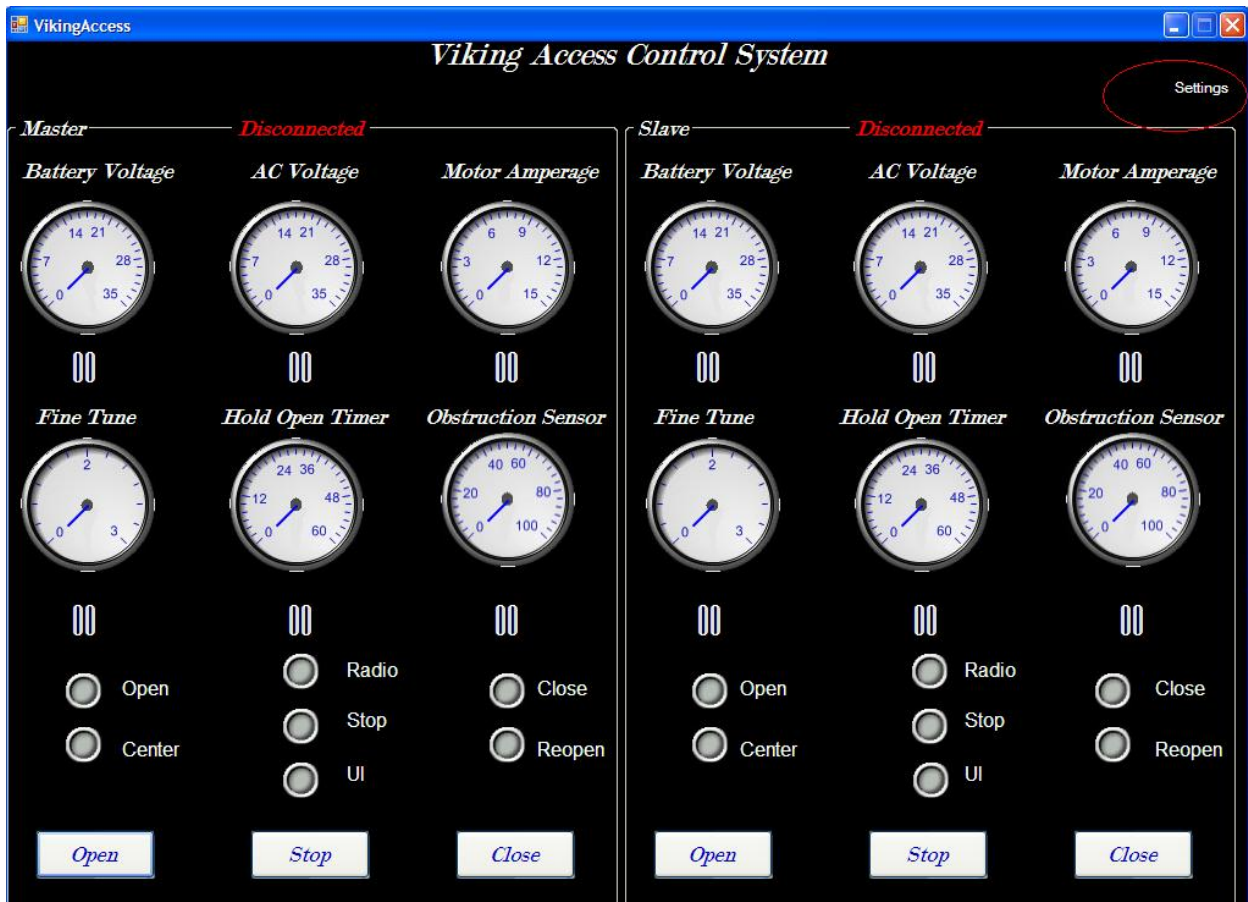


VIKING-BLUE PC APPLICATION USER MANUAL

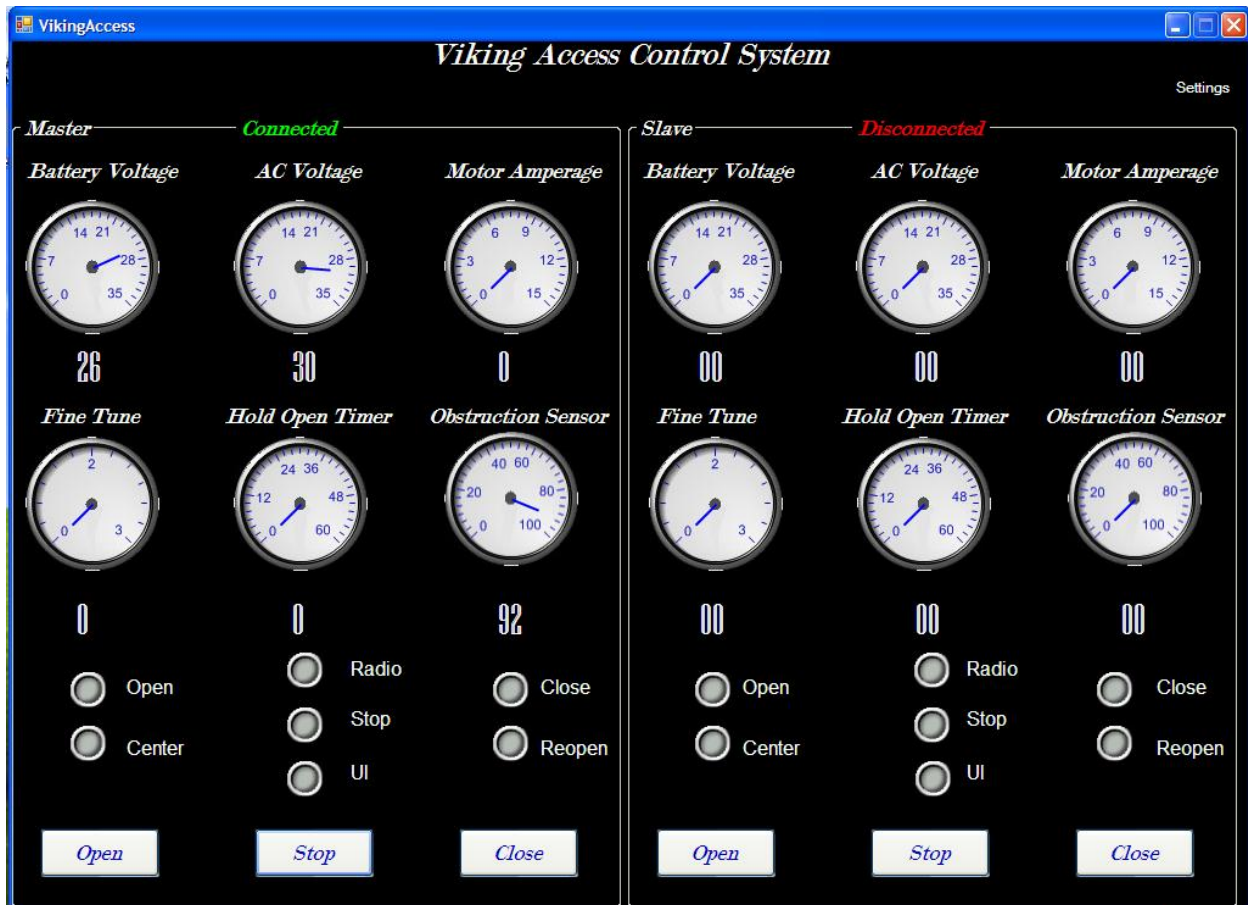
- 1- make sure your computer's Bluetooth device is on.
- 2- run the application by clicking the shortcut on your desktop or under Start/all programs/Viking access systems/Viking-Blue for PC/Viking-Blue for PC. Click on settings on the top right corner.



IF YOU HAVE A SINGLE GATE OPERATOR.

- Connect **Viking-Blue Bluetooth Device** to the control board JP2 Jumper in a way that the first wire is facing 4Amp Fuse.
- Choose your unit model from **Master** Unit Box.
- Click on the search button to find the unit.
- Wait for approximately 20 seconds.
- After you find the right Viking-Blue device (The one that you already connected to the control board), select it from Bluetooth Device Box and click on **Connect** button. You are done with settings.





IF YOU HAVE MASTER/SLAVE GATE OPERATOR.

- a- Connect **Viking-Blue Bluetooth Device** to the Master control board JP2 Jumper in a way that the first wire is facing 4Amp Fuse.
- b- Choose your unit model from **Master Side** unit Box.
- c- Click on the search button to find the unit.
- d- Wait for approximately 20 seconds.
- e- After you find the right Viking-Blue device (The one that you already connected to the **Master** control board), select it from Unit Box and click on **Connect** button. You are done with Master side settings.
- f- If you want to diagnose Master/Slave units at a same time you should have another **Viking-Blue Bluetooth Device** connected to the Slave unit otherwise unplug the master side **Viking-Blue Bluetooth Device** and use it for slave side.
- g- Click once again on the **settings** button on top right corner of the main screen.
- h- This time click on the search button on **Slave side**.
- i- Wait for approximately 20 seconds.

- j- After you find the right Viking-Blue device (The one that you already connected to the **Slave** control board), select it from Unit Box and click on **Connect** button. You are done with slave side settings as well.

VIKING-BLUE COMMANDS AND GAUGES

- a- Sending a command to the unit

Make sure you are connected to the unit.

For sending commands to Master unit use the buttons on master side and for the Slave Unit use the buttons on Slave Side.

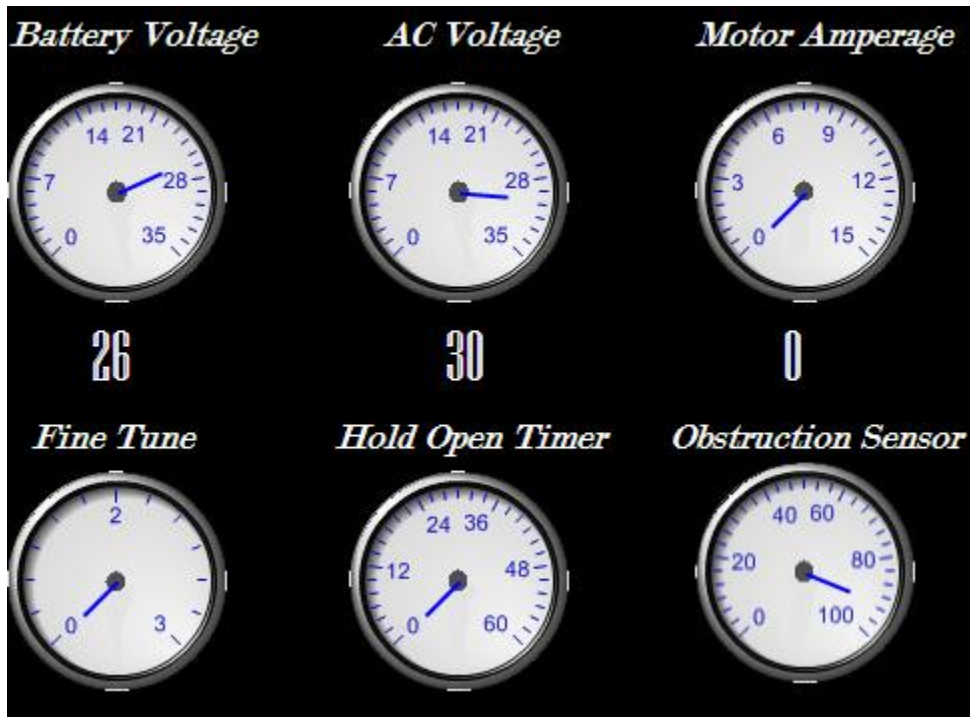
Command	Related button
To Open The Gate	OPEN
To Close The Gate	CLOSE
To Stop The Gate	STOP



b- Gauges

Gauges are using to indicate the status of the Unit. Use the following table for details.

Gauge	Description	Range
AC Voltage	Input AC voltage of the board (After Transformer).	20~30
Battery Voltage	Output charging voltage of the board	22~28
Fine Tune/Overlap delay	Status of the Fine tune/Overlap Delay Trim POT on the board.	0~3 or 0~6
Obstruction Sensor	Status of the Obstruction sensor Trim Pot on the board.	0% ~ 100%
Hold Open Timer	Status of The Hold Open Timer Trim POT on the board.	0~60 Seconds
Motor Amperage	Indicates the actual motor amperage.	Depends on the gate and model



c- Indicators

Indicators are used to indicate the status of buttons, Guard station, Radio Station and Loop Connector on the control board. For example next picture indicates that the radio station connector on the board is receiving signals from Radio Receiver.

